

SAX CONTRALTO 2

# WALTZ

COMP. & ARR.  
VITO DI MODUGNO

WALTZ WALTZ ♩=190



*p*

**A**



*pp*



*p*



*p*



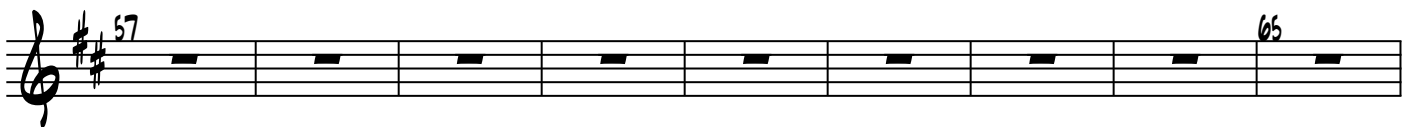
**B** **S**



41



49



57

65

WALTZ

73

81

89

97

105

OPEN SOLOS

113

OPEN LAST

121

129

137

WALTZ

**E**  
145  
mf



Musical staff E, measures 145-152. The key signature is two sharps (F# and C#). The music consists of quarter and eighth notes with rests.

153



Musical staff, measures 153-160. The key signature is two sharps (F# and C#). The music consists of quarter and eighth notes.

**F**  
161



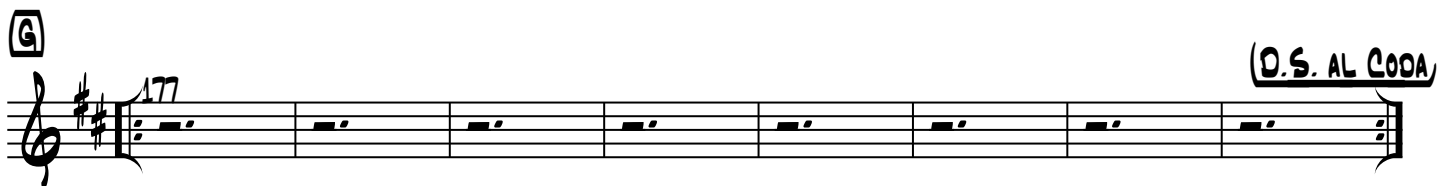
Musical staff F, measures 161-168. The key signature is two sharps (F# and C#). The music consists of eighth and quarter notes.

169



Musical staff, measures 169-176. The key signature is two sharps (F# and C#). The music consists of eighth and quarter notes.

**G**  
177  
(D.S. AL CODA)



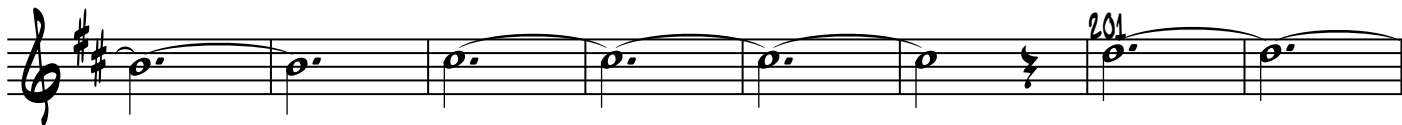
Musical staff G, measures 177-184. The key signature is two sharps (F# and C#). The music consists of whole notes. The instruction "(D.S. AL CODA)" is written above the staff.

**CODA**  
185  
ff



Musical staff, measures 185-192. The key signature is two sharps (F# and C#). The music consists of half notes. The instruction "CODA" is written above the staff, and "ff" is written below the staff.

193



Musical staff, measures 193-200. The key signature is two sharps (F# and C#). The music consists of half notes.

201  
Rit.



Musical staff, measures 201-208. The key signature is two sharps (F# and C#). The music consists of half notes. The instruction "Rit." is written above the staff.

